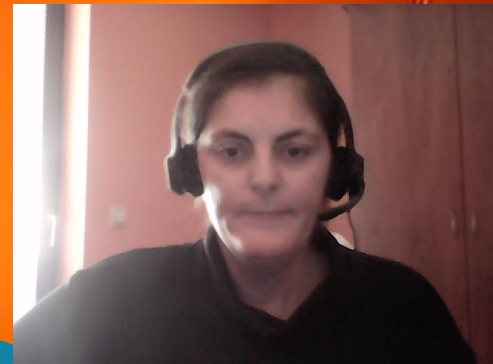


# Introduction to the **Green List Programme** and its components

Milica Miskovic - IUCN

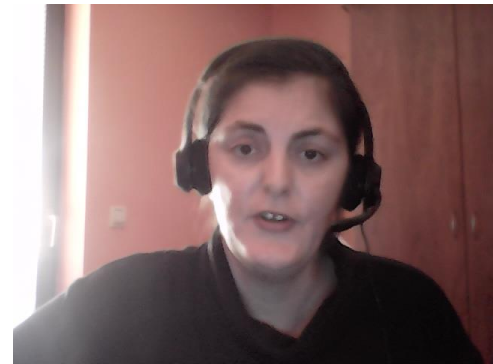


# ● Global Biodiversity Framework



## Target 3

Ensure and enable that by 2030 at least 30 per cent of terrestrial and inland water, and of coastal and marine areas, especially **areas of particular importance for biodiversity and ecosystem functions and services**, are **effectively conserved and managed** through **ecologically representative, well-connected and equitably governed systems of protected areas and other effective area-based conservation measures**, recognizing indigenous and traditional territories, where applicable, and **integrated into wider landscapes, seascapes and the ocean**, while **ensuring that any sustainable use**, where appropriate in such areas, is **fully consistent with conservation outcomes, recognizing and respecting the rights of indigenous peoples and local communities, including over their traditional territories**.



# European policy frameworks

## Barcelona Convention

- **Flagship initiative:** the Mediterranean Strategy for Sustainable Development: *"Promote the "Green List" (IUCN World Parks Congress) in riparian states to assess the efficiency and effectiveness of the park management bodies created"*

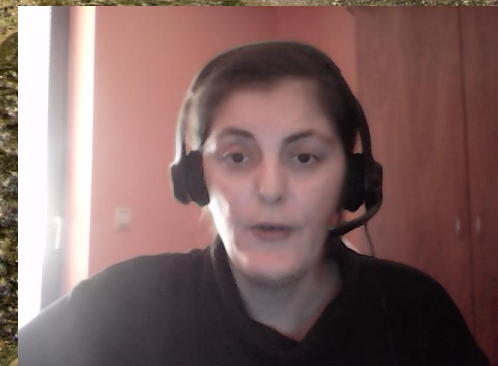
## EU Biodiversity Strategy 2030

- **Recognised instrument** in the Commission's working document on *"Criteria and guidance for the designation of protected areas"* "... tools such as the IUCN Green List of Protected Areas can help Member States assess the effectiveness of protected area management and governance."

Gorgona Natural National Park, Colombia



Mediterranean  
Action Plan  
Barcelona  
Convention





# ● What is the Green List?



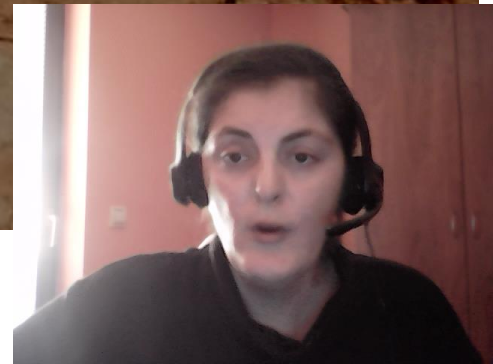
A new programme of certification for protected and conserved areas that are effectively managed and fairly governed

## **Protected Area**

A clearly defined geographical space, recognised, dedicated and managed, through legal or other effective means, to achieve the long-term conservation of nature with associated ecosystem services and cultural values.

## **Conserved Area (OECM)**

A geographically defined area other than a Protected Area, which is governed and managed in ways that achieve positive and sustained long-term outcomes for the in-situ conservation of biodiversity, with associated ecosystem functions and services and where applicable, cultural, spiritual, socio-economic, and other locally relevant values





# The IUCN Green List standard



## Good Governance

- 1.1 Guarantee Legitimacy and Voice
- 1.2 Achieve Transparency and Accountability
- 1.3 Enable Governance Vitality and Capacity to Respond Actively



## Sound Design and Planning

- 2.1 Identify and Understand Major Site Values
- 2.2 Design for Long-Term Conservation of Major Site Values
- 2.3 Understand Threats and Challenges to Major Site Values
- 2.4 Understand Social and Economic Context



## Effective Management

- 3.1 Develop and Implement a Long-Term Management Strategy
- 3.2 Manage Ecological Condition
- 3.3 Manage Within Social and Economic Context of the Area
- 3.4 Manage Threats
- 3.5 Effectively and Fairly Enforce Laws and Regulations
- 3.6 Manage Access, Resources Use and Visitation
- 3.7 Measure Success

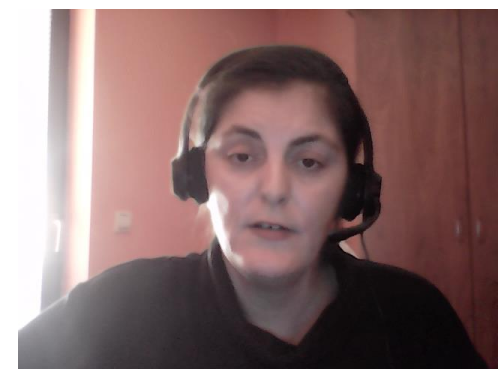


## Successful Conservation Outcomes

- 4.1 Demonstrate Conservation of Major Natural Values
- 4.2 Demonstrate Conservation of Major Associated Ecosystem Services
- 4.3 Demonstrate Conservation of Cultural Values



[iucngreenlist.org](http://iucngreenlist.org)





# The most universal standard for effective area-based conservation

## Integration between Green List and PAME tools



Assessment of the scope and depth of each of the seven effectiveness methodologies against the standard criteria and generic indicators of the IUCN Green List. Source: WCMC

### MEAT

Marine Protected Area Effectiveness Assessment Tool



### SAGE

Site-level assessment of governance and equity



### WHO

World Heritage Outlook



### METT

Management Effectiveness Tracking Tool



### EOH 2

Enhancing Our Heritage Toolkit



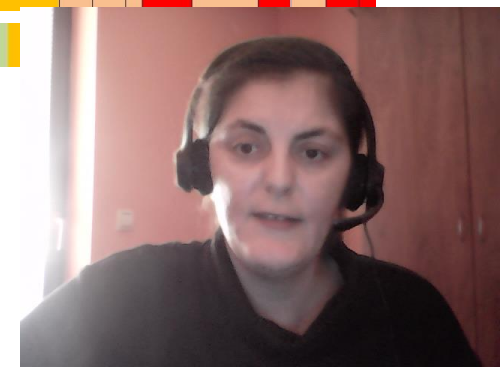
### RAPPAM

Rapid Assessment and Prioritisation of Protected Area Management Tool



### IMET

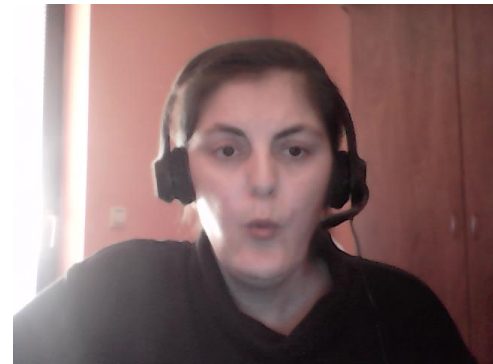
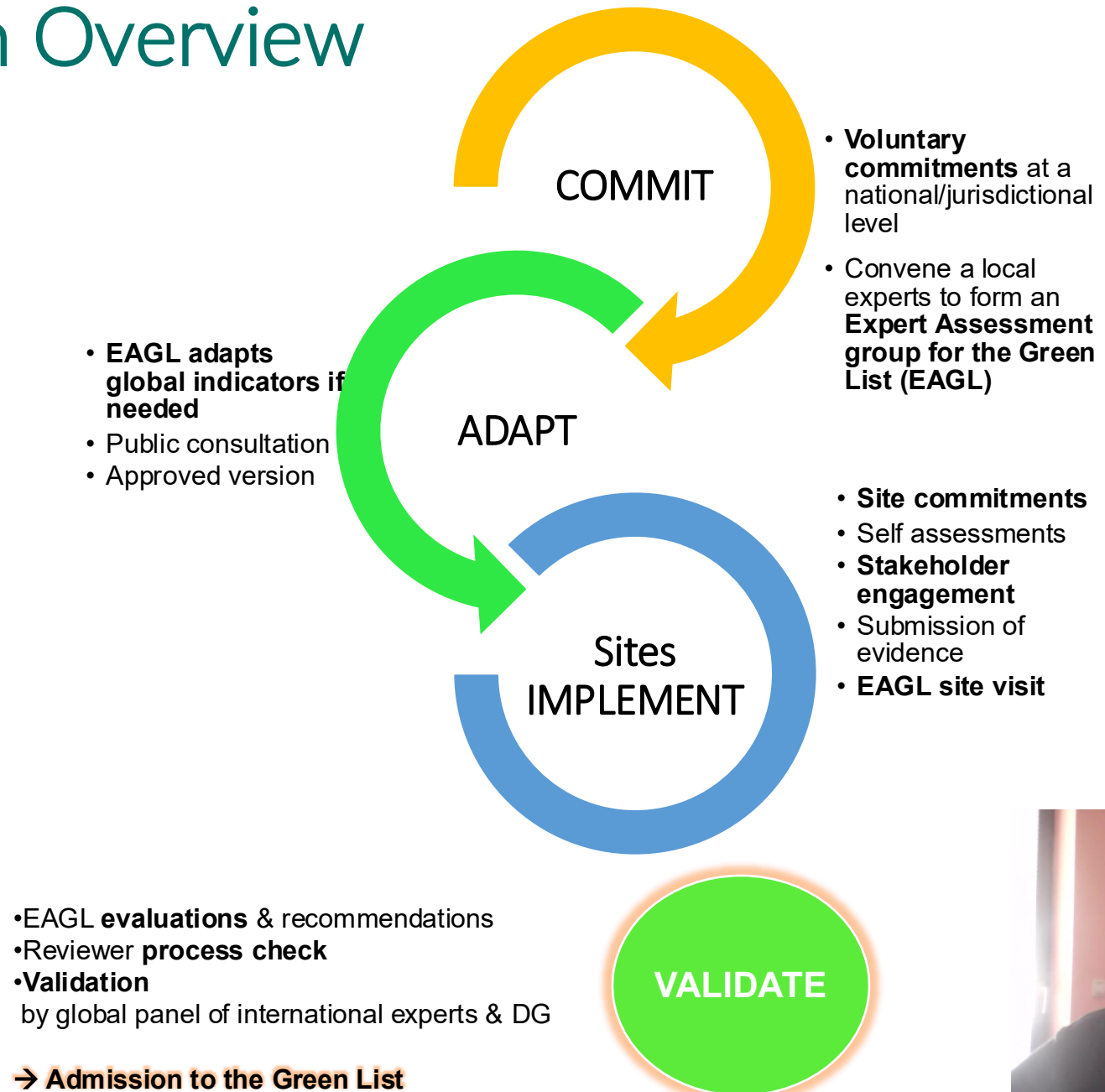
Integrated Management Effectiveness Tool







# Implementation Overview





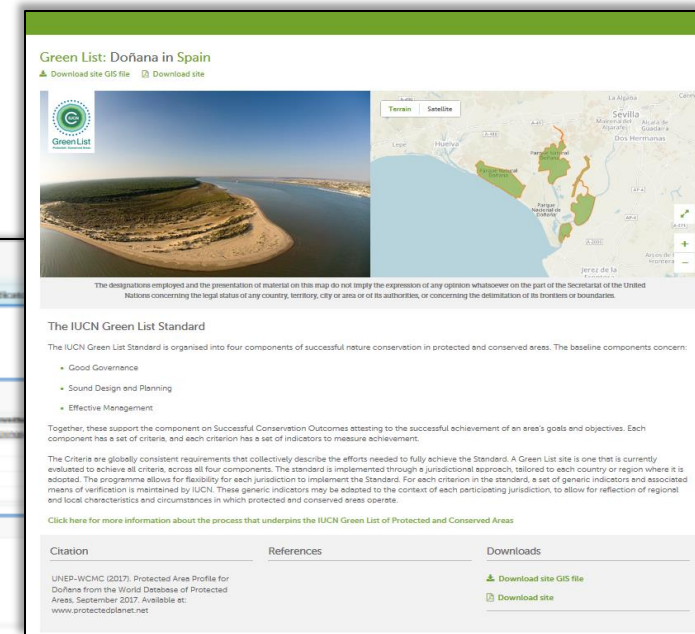
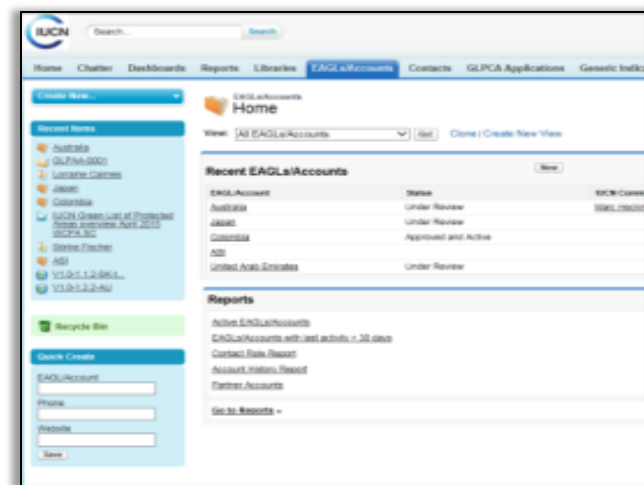
# Information management

All sites and EAGLs get user access to a cloud-based data platform called COMPASS (uses Salesforce database technology)

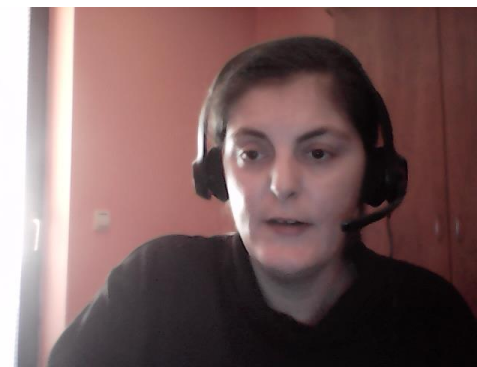
Sites upload all evidence here

EAGL members and reviewers upload site visit reports, meeting minutes, evaluation records

COMPASS access is only for authorised users in the Green List community; public profiles of countries and listed sites with summary information are featured on [www.iucngreenlist.org](http://www.iucngreenlist.org) and [www.protectedplanet.net](http://www.protectedplanet.net)



protected  
planet®





**100** Implementing partners  
**+10** projects

**225** listings from **18** countries  
**300+** engaged sites, of which **108**  
formally committed  
**37** jurisdictions  
**300+** experts  
**3** global committees

California  
MPA Network

RAMPAO  
Network

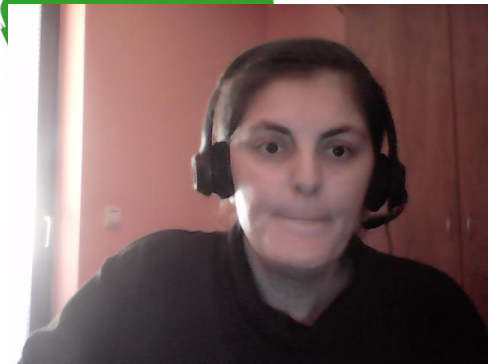
WIOMSA  
Network

**2025**

#### EAGLs

- Established
- Regional
- Marine-focused
- Ongoing

A global footprint





# Europe, North Africa, Central Asia

5 Jurisdictions  
(consolidated)

12 Jurisdictions  
(under development)

+50 Experts

25 Certified cites

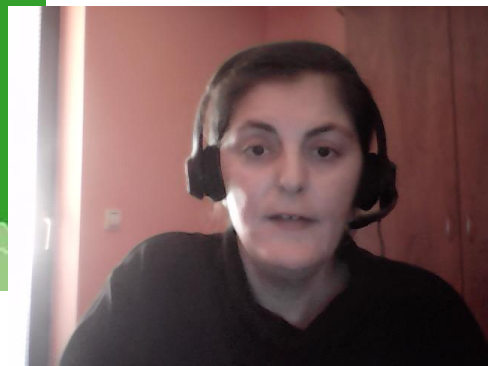
1 Regional Marine EAGL

## EAGLs

- Established
- Ongoing
- Marine focus ongoing

## Sites

- Green Listed







# Values for governments

- Provides a **framework for assessing and managing the conservation status of systems of protected areas**
- Publicly **demonstrates national commitments to conservation** and sustainable development
- **Supports governments** in meeting their obligations under international conventions
- Helps Governments **raise awareness and generate support** for their protected areas
- **Provides a benchmark** for improving the effectiveness of conservation management
- Helps Governments to **attract international collaboration** and support for conservation



Credit: Dimitris P.



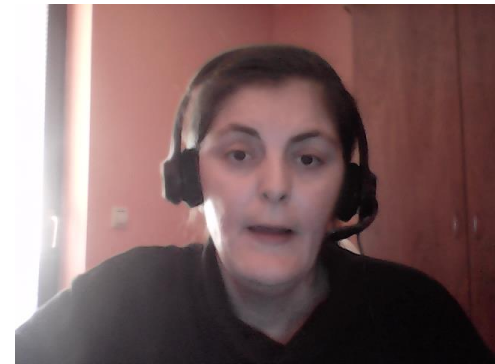


# Case Studies

Côte Bleue Marine park, France



Swiss National Park *Parc Naziunal Svizzer*







# Green List Partners

Thank you

Milica Miskovic  
IUCN ECARO  
iucn.org  
iucngreenlist.org

